



# GLEN ROSE ISD

LOVE | SERVE | LEAD

## BOND ELECTION 2023

EARLY VOTING : APRIL 24 - MAY 2 | ELECTION DAY : MAY 6

### WHAT'S PROPOSED



#### SECURITY

- Keyless entry points
- Connect Junior High gym to main building



#### EXPANSION

##### Elementary School

- 1,961 SF addition for Pre-K classrooms

##### Intermediate School

- 1,160 SF expansion for parent pick-up/drop-off improvements

##### High School

- 16,000 SF addition for CTE/Ag Mech



#### IMPROVEMENTS

##### District Wide

- HVAC improvements/replacements
- Furniture
- Equipment for fine arts (band, choir, theatre)
- Ag Farm improvements

##### Elementary School

- New playground

##### Intermediate School

- New playground

##### High School

- CTE/Auto Shop improvements
- New roadway connection from North parking lot to rear parking lot
- Indoor Multi-Purpose Center



#### ADDITIONAL PROJECTS IN CONSIDERATION

- New parking lot across from Intermediate School
- District wide cafeteria and restroom improvements
- Additional seating for tennis, softball, and baseball
- District wide additions to exterior lighting
- Vehicular and equipment improvements for transportation facility

**TOTAL : \$31,000,000**

### Summary of Tax Rates in Glen Rose School District \*

\* Based on tax year 2022

#### COMBINED TAX RATE: 0.975

#### M & O TAX RATE: 0.8546

#### I & S TAX RATE: 0.1204

→ Statewide average tax rate of 1.1827

→ Statewide average tax rate of 0.9553

→ Statewide average tax rate of 0.2274

→ 879 districts with higher tax rates

→ 864 districts with higher tax rates

→ 765 districts with higher tax rates

→ 135 districts with lower tax rates

→ 138 districts with lower tax rates

→ 249 districts with lower tax rates

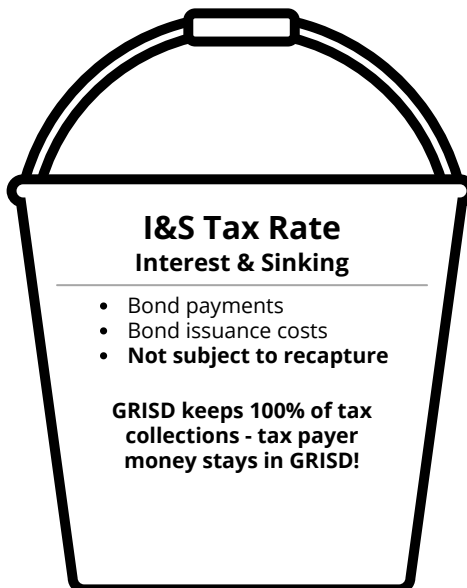
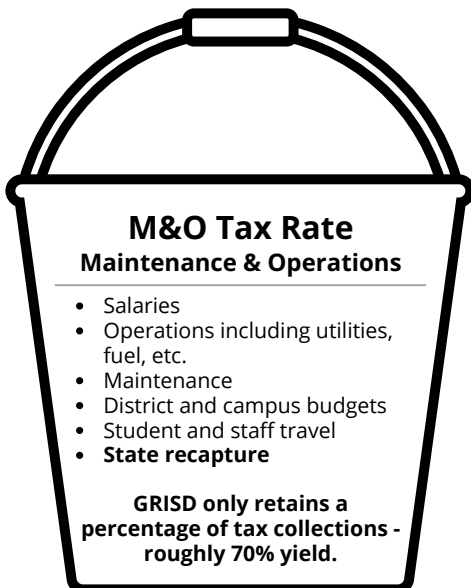
→ Bottom 13%

→ Bottom 13.5%

→ Bottom 21% of all reported Texas ISDs

→ Bottom 11% of all Texas ISDs with an I&S tax rate

Note: GRISD has saved over \$1.8 million in interest on previous bonds (1997 & 2010 elections) by taking advantage of bond refunding programs and early pay-off options.



**NO INCREASE TO CURRENT TAX RATE OF \$0.975**

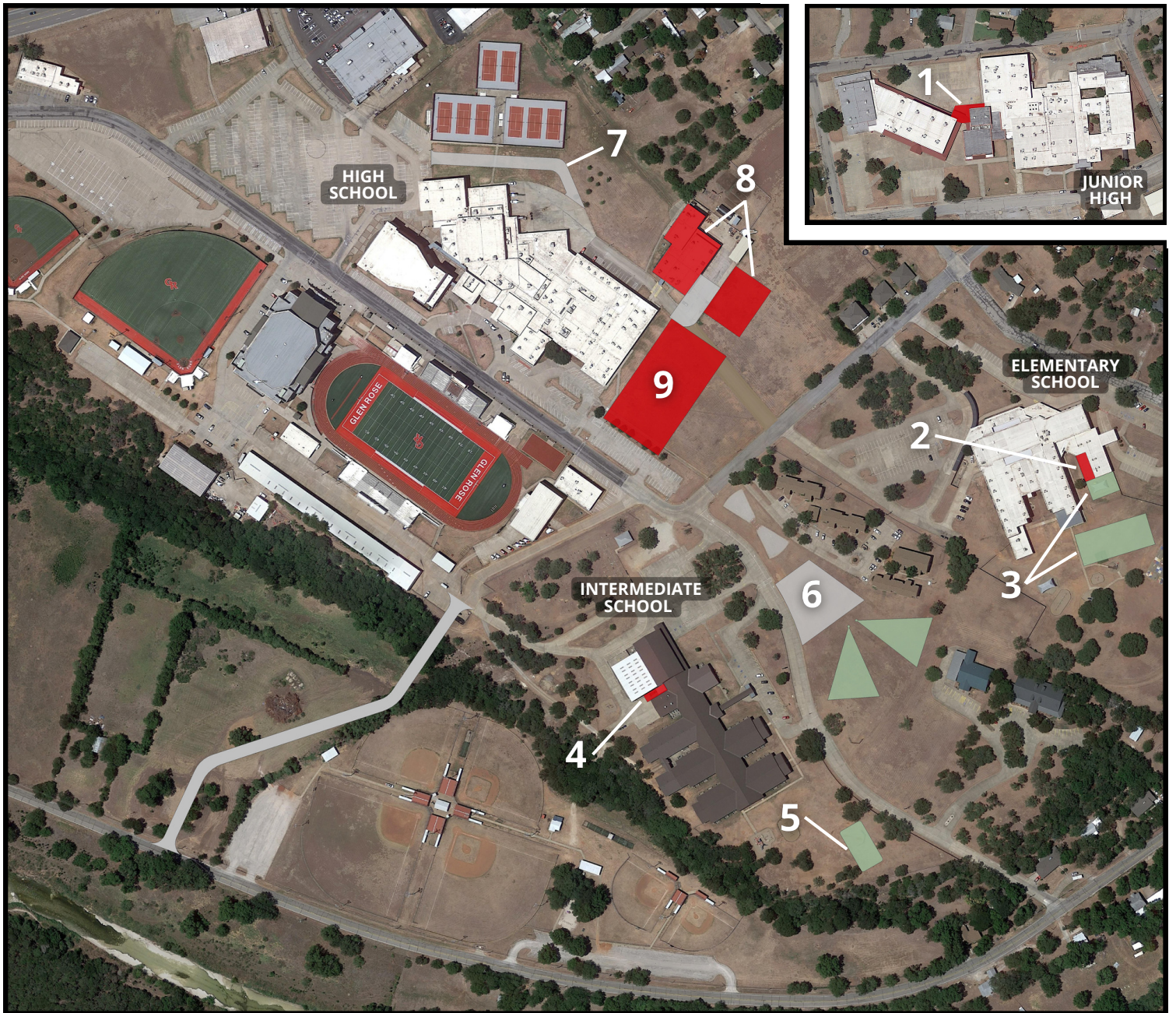
**At the election, the following language will appear on the ballot:**

Glen Rose ISD Proposition A:  
The issuance of \$31,000,000 of bonds by the Glen Rose Independent School District for school buildings, buses and vehicles, and levying the tax in payment thereof. This is a property tax increase.

**If there is no tax rate increase, why does the ballot say this?**

While there is no tax rate increase, Texas State law requires the phrase "This is a property tax increase" to be on every school bond measure ballot.

# PROPOSED PROJECTS



- 1. **Security** - Connect Junior High gym to main building
- 2. **Expansion** - Addition of pre-kindergarten classrooms
- 3. **Improvements** - New playground
- 4. **Expansion** - Expansion for parent pick-up/drop-off
- 5. **Improvements** - New playground
- 6. **Project in Consideration** - New parking lot with relocated discus field
- 7. **Improvements** - New roadway connection from North parking lot to rear parking lot
- 8. **Expansion** - Addition for CTE/Ag Mech and improvements to existing CTE/Auto Shop
- 9. **Improvements** - Indoor Multi-Purpose Center



The main priorities of the May 2023 bond are the safety of our students and staff, managing program/student growth, and maintaining and updating the facilities that we are so fortunate to have in GRISD. The goal of the proposed projects is to enhance every child's experience at GRISD and equip them for their future endeavors.

**FOR MORE INFORMATION VISIT [WWW.GRISD.NET/GRISD-BOND-2023](http://WWW.GRISD.NET/GRISD-BOND-2023)**