

Voting

Once learners have registered, and they are connected to the correct ActivHub, they can use their Promethean ActivEngage Mobile client to answer questions you ask in ActivInspire or Promethean ActivOffice.

If you have ActivExpression devices, you can use these in the same voting session as Promethean ActivEngage Mobile clients.

VOTING SESSIONS

There are three types of voting session.

Session	Description
ExpressPoll	Learners answer a quick or ad hoc question. You can hold an ExpressPoll at any time, even when there is no flipchart or slide show open.
Prepared Questions	Learners answer prepared questions. You can insert one question and an optional follow-on question into each flipchart page or slide. Questions appear on the flipchart page or slide, they are not sent to the devices. All learners answer the same question at the same time.
Self-Paced Questions	Questions are sent to each learner's device one question at a time. Each learner works through the question set at their own pace.

QUESTION TYPES

You can choose from the following question types:

- Multiple choice
- Sort in order
- Yes/No
- True/False
- Likert Scale
- Text Entry
- Number Entry

ExpressPoll

Use **ExpressPoll** to quickly ask a question and capture learners' responses. For example, to assess learners' confidence at the start, then to check for changes in perception later in the lesson.

Click **ExpressPoll**.

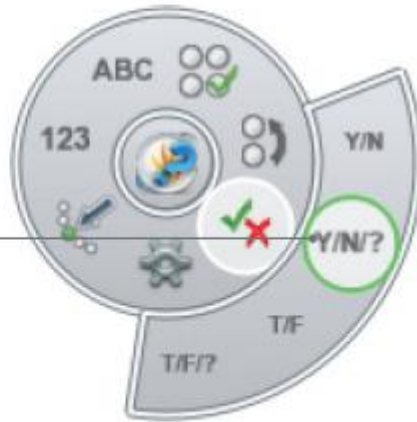
In Promethean ActivOffice you can also select **ExpressPoll** from the ribbon.

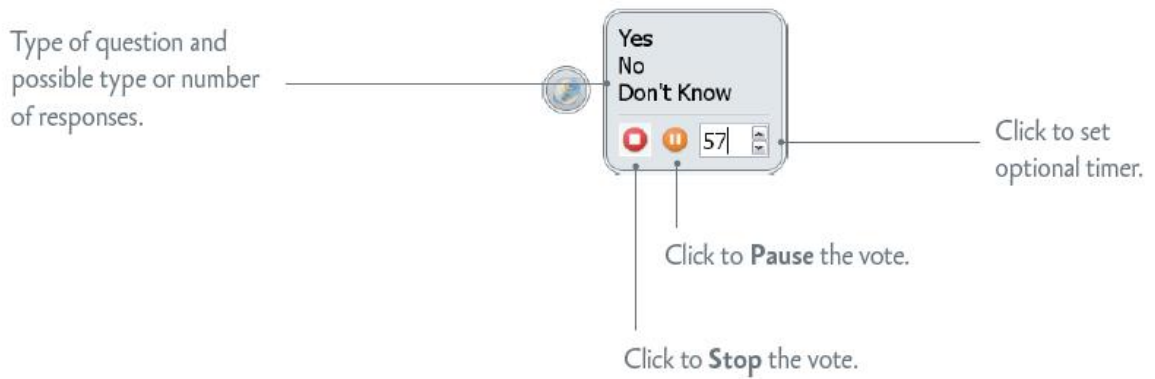


Move the mouse pointer over the Wonderwheel to display options.

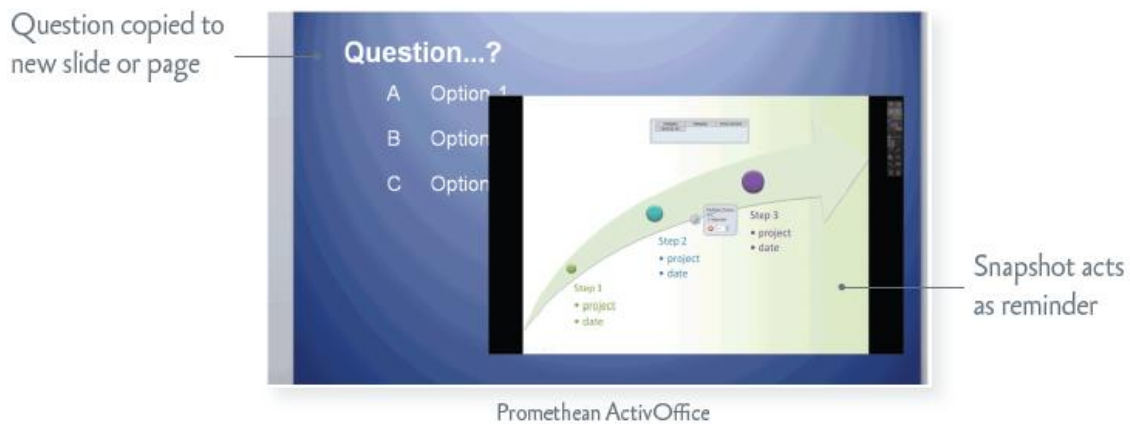


Select a question type and options.





When you ask a question with **ExpressPoll**, the system copies the question data to a new page or slide at the end of the flipchart or show, together with a snapshot of the original page or slide. This gives you the option to use the question in another session. You can edit the question properties with **Question Manager** and format the page or slide.



Prepared questions

Use the Question Manager in ActivInspire or Promethean ActivOffice to prepare individual questions in advance. The process is identical in both, although there are some small differences in the layout of the Question Manager screen.

In ActivInspire you can insert single questions into different flipchart pages in multiple flipcharts. In Promethean ActivOffice you can insert single questions into different slides in a single slide show.

Regardless of which Promethean presentation software you use, make sure you only insert *one question*, and an optional follow-on question, into each slide or page. As soon as you insert more than one question you are creating a Self-Paced Question Set and enter a different world of learning. We introduce Self-Paced Question Sets in the next topic.

Go to another page. Enter Question Properties.

Go to another flipchart

Select Question Type

Optional:
Include a follow-on question.

Choose how the question will appear on the page or slide.

The screenshot shows the 'Question Manager' window. At the top, there are tabs for 'Prepared questions', 'Page 4 of 9', 'Design View', 'Document View', and 'Question Generators'. Below the tabs is a toolbar with icons for adding, deleting, and saving questions. The main area is divided into a table on the left and a 'Question Properties' panel on the right. The table has columns for 'Question', 'Question Type', 'Options', and 'Correct Answers'. The 'Question Properties' panel includes a 'Multiple Choice' dropdown, a text input for the question, a list of options (A-F) with 'Correct answer' checkboxes, a 'Number of responses required' field, a 'Design correct answer' checkbox, a 'Time limit' field, and an 'Include follow-on question' checkbox. Below these are 'Follow-On Question' and 'Flipchart Page Properties' sections. The 'Flipchart Page Properties' section shows a grid of question types: 'Plain Text', 'E30.ap2', 'D34.ap2', 'D45.ap2', 'E51.ap2', and 'D60.ap2'. At the bottom right are 'Done', 'Discard Changes', and 'Apply' buttons.

ActivInspire

Click to Close.

Make sure that your learners have started Promethean ActivEngage Mobile on their devices and that they are connected to the correct virtual ActivHub.

Navigate to a page or slide that contains a previously prepared question.

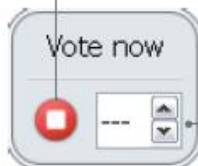


The **Start Vote**  button is now enabled.

Click to **Start** the vote.




Click to **Stop** the vote.



Click to set optional timer.

The voting session stops in one of three ways:

- All learners answer the question.
- You click **Stop Vote** .
- The timeout is reached.

Self-Paced Question Sets

Unlike prepared questions, where all learners respond at the same time, Self-Paced Question Sets allow individuals to progress at their own pace. During a voting session, questions are *not* displayed on the page or slide. Instead, learners receive each question on their Promethean ActivEngage Mobile device, one question at a time.

You can:

- Enter as many questions as you wish into a question set.
- Group questions into up to 9 levels of difficulty.
- Choose how many questions each learner must answer correctly before they can progress to the next level.
- Shuffle questions to change their order.
- Randomise questions, so that each learner receives all questions in a different order from the others.
- Auto-generate basic numeracy questions with the **Question Generator**.

Use the **Question Manager** to prepare Self-Paced Question Sets. The process is almost identical to the process of creating single questions. But instead of creating a single question on each page or slide, you just keep going and create as many questions as required.

Question Generator Enter Test Properties.

Quickly insert a number of questions.

Choose to send feedback to learners.

Choose look and feel of page or slide.

The screenshot shows the 'Question Manager' application window. The main area contains a table of questions with columns for 'Question', 'Question Type', 'Level', and 'Options'. The right-hand side features a 'Question Properties' panel with various settings for the selected question (Question 9).

Question	Question Type	Level	Options
Question 1	Multiple Choice	Level 1	Option 1; Option 2; Option 3; C
Question 2	Multiple Choice	Level 1	Option 1; Option 2; Option 3; C
Question 3	Multiple Choice	Level 1	Option 1; Option 2; Option 3; C
Question 4	Yes/No	Level 1	Yes; No
Question 5	Yes/No	Level 2	Yes; No
Question 6	Text	Level 2	
Question 7	Sort in Order	Level 3	Option 1; Option 2; Option 3; C
Question 8	Multiple Choice	Level 3	Option 1; Option 2; Option 3; C
Question 9	Multiple Choice	Level 3	Option 1; Option 2; Option 3; C
Question 10	Multiple Choice	Level 3	Option 1; Option 2; Option 3; C
Question 11	Multiple Choice	Level 3	Option 1; Option 2; Option 3; C
Question 12	Multiple Choice	Level 4	Option 1; Option 2; Option 3; C
Question 13	Multiple Choice	Level 4	Option 1; Option 2; Option 3; C
Question 14	Multiple Choice	Level 4	Option 1; Option 2; Option 3; C
Question 15	Multiple Choice	Level 4	Option 1; Option 2; Option 3; C
Question 16	Multiple Choice	Level 4	Option 1; Option 2; Option 3; C
Question 17	Multiple Choice	Level 4	Option 1; Option 2; Option 3; C
Question 18	Multiple Choice	Level 4	Option 1; Option 2; Option 3; C
Question 19	Multiple Choice	Level 4	Option 1; Option 2; Option 3; C
Question 20	Multiple Choice	Level 4	Option 1; Option 2; Option 3; C
Question 21	Multiple Choice	Level 4	Option 1; Option 2; Option 3; C
Question 22	Multiple Choice	Level 4	Option 1; Option 2; Option 3; C
Question 23	Multiple Choice	Level 4	Option 1; Option 2; Option 3; C
Question 24	Multiple Choice	Level 4	Option 1; Option 2; Option 3; C
Question 25	Multiple Choice	Level 4	Option 1; Option 2; Option 3; C
Question 26	Multiple Choice	Level 4	Option 1; Option 2; Option 3; C
Question 27	Multiple Choice	Level 4	Option 1; Option 2; Option 3; C
Question 28	Multiple Choice	Level 4	Option 1; Option 2; Option 3; C
Question 29	Multiple Choice	Level 4	Option 1; Option 2; Option 3; C
Question 30	Multiple Choice	Level 4	Option 1; Option 2; Option 3; C
Question 31	Multiple Choice	Level 4	Option 1; Option 2; Option 3; C
Question 32	Multiple Choice	Level 4	Option 1; Option 2; Option 3; C
Question 33	Multiple Choice	Level 4	Option 1; Option 2; Option 3; C
Question 34	Multiple Choice	Level 4	Option 1; Option 2; Option 3; C
Question 35	Multiple Choice	Level 4	Option 1; Option 2; Option 3; C
Question 36	Multiple Choice	Level 4	Option 1; Option 2; Option 3; C
Question 37	Multiple Choice	Level 4	Option 1; Option 2; Option 3; C
Question 38	Multiple Choice	Level 4	Option 1; Option 2; Option 3; C
Question 39	Multiple Choice	Level 4	Option 1; Option 2; Option 3; C
Question 40	Multiple Choice	Level 4	Option 1; Option 2; Option 3; C
Question 41	Multiple Choice	Level 4	Option 1; Option 2; Option 3; C
Question 42	Multiple Choice	Level 4	Option 1; Option 2; Option 3; C
Question 43	Multiple Choice	Level 4	Option 1; Option 2; Option 3; C
Question 44	Multiple Choice	Level 4	Option 1; Option 2; Option 3; C
Question 45	Multiple Choice	Level 4	Option 1; Option 2; Option 3; C
Question 46	Multiple Choice	Level 4	Option 1; Option 2; Option 3; C
Question 47	Multiple Choice	Level 4	Option 1; Option 2; Option 3; C
Question 48	Multiple Choice	Level 4	Option 1; Option 2; Option 3; C
Question 49	Multiple Choice	Level 4	Option 1; Option 2; Option 3; C
Question 50	Multiple Choice	Level 4	Option 1; Option 2; Option 3; C

The 'Question Properties' panel on the right includes sections for:

- Question Properties:** Text input, Correct answer, Mark answer case sensitively, Assign correct answer.
- Test Properties:** General Knowledge Test 1, You have 3 minutes to answer 12 questions. Good luck!
- Time limit:** 00:03:00
- Control progress through levels:** A table with columns for Level, Correct Answers, and Randomize.
- Test Feedback Properties:** Send message to learner when, Answer correct (Correct), Answer incorrect (Incorrect), Send summary.
- Slide Properties:** (Empty section)

Level	Correct Answers	Randomize
Level 1	4	No
Level 2	2	No
Level 3	2	No
Level 4	2	No
Level 5	1	No
Level 6	1	No

Each response is displayed in ActivInspire or Promethean ActivOffice as soon as it has been sent.

You can choose between two display formats:

- Timeline
- Level Summaries

These show you at a glance:

- How well learners are doing individually and as a group.
- If anyone is struggling or racing ahead.

Click to **Stop** the vote.

Click to **Pause** the vote.

Click to change display format and detail.

Time remaining

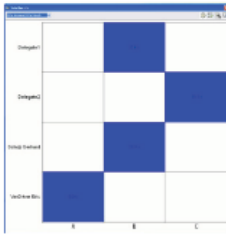
	Level 1	Level 2	Level 3
Billy Ireland	5 0 0:03	5 2 0:05	0 0 0:00
Devise 1	0 0 0:00	0 0 0:00	0 0 0:00
Kinnikuman	0 0 0:00	0 0 0:00	0 0 0:00
Mammoth Man	0 0 0:00	0 0 0:00	0 0 0:00
Matts Engage	0 1 0:03	0 2 0:04	0 0 0:00
Naimi	6 4 0:05	4 2 0:05	0 0 0:00
Paul C	0 0 0:00	0 0 0:00	0 0 0:00
karla	0 0 0:00	0 0 0:00	0 0 0:00
scott	0 0 0:00	0 0 0:00	0 0 0:00
scott1	3 3 0:11	0 0 0:00	0 0 0:00

You can pause a session at any time to clarify matters, to provide additional information, or to open a discussion. Learners cannot respond while the vote is paused. When you resume the vote, the client displays the previous question again.

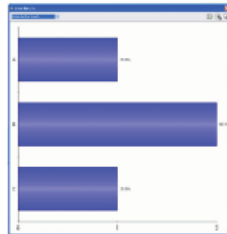
Voting results

You can display voting results at any time from the **Voting Browser**. Results are displayed in pop-up windows in ActivInspire or Promethean ActivOffice.

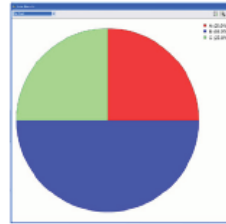
You can display results in eight different formats:



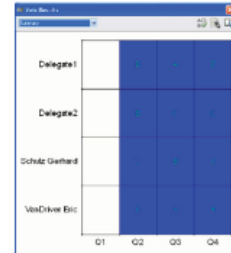
Who Answered
What Graph



Horizontal
Bar Graph



Pie Chart



Summary

Items	Response	Time
Delegate1	D	11:16
Delegate2	C	15:14
Scholz Gerhard	D	13:24
VanDrieh Eric	A	0:34

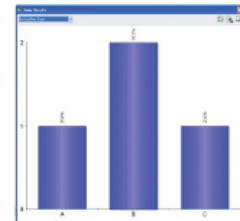
Who Answered
What List

User	Score	%
Delegate1	0	0.0
Delegate2	0	0.0
Scholz Gerhard	0	0.0
VanDrieh Eric	0	0.0

Overall Teacher Paced
Score

Question	Percentage
A	25.00%
B	50.00%
C	25.00%

Text Report



Vertical Bar Graph

You can also:

- Paste results into your flipchart or slide show.
- Access results later with the **Results Browser**.
- Export voting results to Microsoft Excel. *

* ActivInspire users require Professional Edition version 1.4 or later to export Self-Paced Question Set results.